

# enesco®

## enesco®

### NATURALISTIC STONE & WOOD SPC COLLECTION



PHTHALATE FREE



PHTHALATE FREE



#### WHY TO CHOOSE SPC FLOORING

##### Characteristics and advantages:

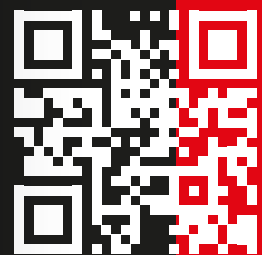
SPC flooring is designed to identically replicate traditional flooring materials such as stone, ceramic, wood and metal while providing many more practical benefits. Using realistic photographic prints along with a clear vinyl top layer, this flooring opens the door to a wide variety of selection, while significantly reducing the flooring budget compared to other luxury floorings. It is one of the best alternatives for floors with high foot traffic, such as hotels, restaurants, hospitals, offices, schools, airports besides domestic areas. Unlike other floorings, combining a mixture of PVC and stone powder with multilayered construction, it offers high resistance against impacts, scratches, abrasions, liquids, temperature changes, under-floor heating and colour fading. Besides, thanks to its pre-attached underlay, it has softer feeling and sound-reducing feature.

##### Less costly and less time consuming installation/uninstallation:

Its innovative click system enables easy loose-lay installation method without adhesive, whereas its pre-attached underlay eliminates the need for precise sub-floor preparation. Besides, uninstallation is also as easy as 1-2-3. These features, which provide significant savings in time and money, make the product even more preferable, especially in cases where time and budget is main concern for an elegant and extremely durable floor renovation.

##### No-cost maintenance:

It is much easier to maintain than other luxury floor coverings. Since it is extremely water resistant, just grab a damp mop and clean. Like other vinyl floorings, SPC flooring is very hygienic, as they have a sealed surface that prevents the penetration of bacteria.



## NATURALISTIC STONE & WOOD SPC COLLECTION



[www.enesco.com.tr](http://www.enesco.com.tr)





## NATURALISTIC STONE SPC COLLECTION

**PHTHALATE FREE**



**ENESCO**

[www.enesco.com.tr](http://www.enesco.com.tr)

## NATURALISTIC STONE SPC COLLECTION



ENS-023054/5



ENS-023033/1



ENS-023069/9



ENS-023054/2



ENS-023033/2



ENS-023040/3

- product size : 305 mm x 915 mm
- tile thickness : 5 mm (4 mm + 1 mm IXPE)
- wearlayer : 0,30 mm
- click system : I4F
- surface structure : standard wood emboss

- pieces per box : 8 pcs
- sqm per box : 2,23 m2
- kg per box : 18,56 kg
- kg per sqm : 8,32 kg
- sqm per pallet : 120,42 m2
- pallet size (cm) : 101x126x70



[www.enesco.com.tr](http://www.enesco.com.tr)





## NATURALISTIC STONE SPC COLLECTION



ENESCO®

www.enesco.com.tr

**ULTIMATE SHIELD SCRATCH  
RESISTANT UV COATING**  
10X STRONGER AT RESISTING  
SCRATCHES, STAINS  
AND ABRASIVES  
THEN REGULAR UV

**12 (0.30mm) | 22 (0.55mm)  
MIL WEAR LAYER**  
PROTECTS THE HD FILM

**HD PRINT FILM**  
WITH WIDE VARIATION

**STONE POLYMER  
COMPOSITE (SPC) CORE**  
100% WATERPROOF CORE  
UNICLIC LOCK SYSTEM  
2000 KGS/M3 DENSITY  
70% LIMESTONE

**HIGH DENSITY IXPE  
PAD UNDERLAYMENT**  
SUPERIOR TO  
EVA UNDERLAYMENT  
ADVANCED SOUND  
REDUCTION PROVIDE  
EXTRA COMFORT

**STRONG STONE POLYMER CORE**  
- Made of 70% stone powder for ultimate impact strength

How to engage  
3L TripleLock & Click4U  
Using your hands



**PHthalate FREE**  
INNOVATIONS  
FLOORING

**NATURALISTIC  
STONE  
SPC COLLECTION**



ENESCO®

## RIGID CORE WATERPROOF STONE COMPOSITE FLOORING

Drop-Lock Easy Installation  
Scratch, Stain & Scuff Resistant  
Pre-Attached Acoustic Pad



**DURABLE - ULTIMA**  
- Scratch and Stain Resistant Coating  
- Double UV Coating

**EASY DROP LOCK INSTALLATION**  
- Score and Snap Easily  
- Locks Securely



NATURALISTIC  
STONE  
SPC COLLECTION



ENESCO®

[www.enesco.com.tr](http://www.enesco.com.tr)



ENS-023054/5

NATURALISTIC  
STONE  
SPC COLLECTION



ENESCO®

[www.enesco.com.tr](http://www.enesco.com.tr)



ENS-023033/1

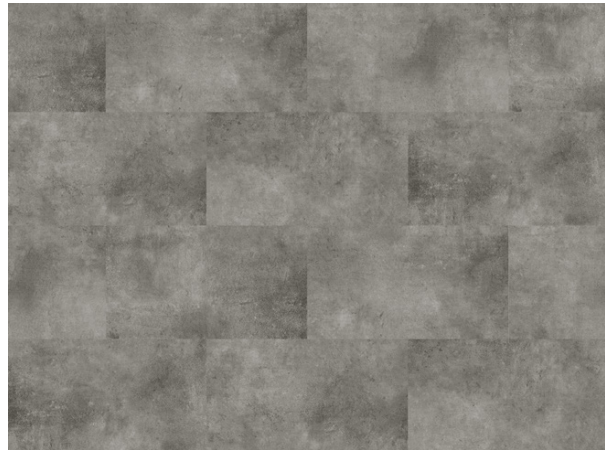
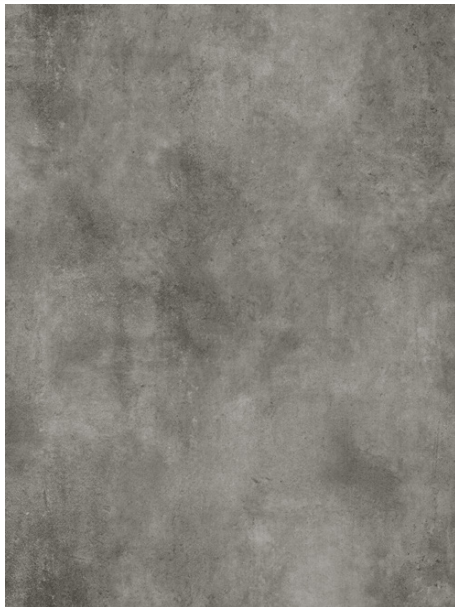


NATURALISTIC  
STONE  
SPC COLLECTION



enesco

[www.enesco.com.tr](http://www.enesco.com.tr)



ENS-023069/9

NATURALISTIC  
STONE  
SPC COLLECTION



enesco®

[www.enesco.com.tr](http://www.enesco.com.tr)



ENS-023054/2



NATURALISTIC  
STONE  
SPC COLLECTION



ENESCO®

[www.enesco.com.tr](http://www.enesco.com.tr)



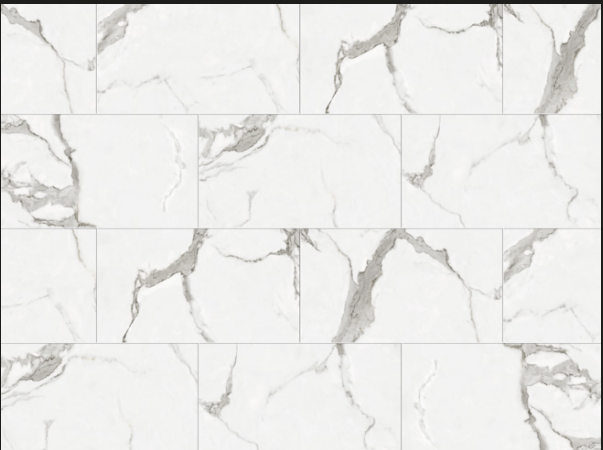
ENS-023033/2

NATURALISTIC  
STONE  
SPC COLLECTION



ENESCO®

[www.enesco.com.tr](http://www.enesco.com.tr)



ENS-023040/3





## NATURALISTIC WOOD SPC COLLECTION



**ENESCO**®

[www.enesco.com.tr](http://www.enesco.com.tr)

## NATURALISTIC WOOD SPC COLLECTION



ENS-029098/4



ENS-029036/1



ENS-07324/1



ENS-029036/15



ENS-029115/9



ENS-029053/4



ENS-029045/6



ENS-029053/3



ENS-02602/2



ENS-029053/7

- product size : 228,60 mm x 1219,20 mm
- tile thickness : 5 mm (4 mm + 1 mm IXPE)
- wearlayer : 0,30 mm
- click system : uniclic
- surface structure : standard wood emboss

- pieces per box : 8 pcs
- sqm per box : 2,23 m2
- kg per box : 18,71 kg
- kg per sqm : 8,39 kg
- sqm per pallet : 107,04 m2
- pallet size (cm) : 101x126x70





## NATURALISTIC WOOD SPC COLLECTION



enesco®

www.enesco.com.tr

**ULTIMATE SHIELD SCRATCH  
RESISTANT UV COATING**  
10X STRONGER AT RESISTING  
SCRATCHES, STAINS  
AND ABRASIVES  
THEN REGULAR UV

**12 (0.30mm) | 22 (0.55mm)  
MIL WEAR LAYER**  
PROTECTS THE HD FILM

**HD PRINT FILM**  
WITH WIDE VARIATION

**STONE POLYMER  
COMPOSITE (SPC) CORE**  
100% WATERPROOF CORE  
UNICLIC LOCK SYSTEM  
2000 KGS/M3 DENSITY  
70% LIMESTONE

**HIGH DENSITY IXPE  
PAD UNDERLAYMENT**  
SUPERIOR TO  
EVA UNDERLAYMENT  
ADVANCED SOUND  
REDUCTION PROVIDE  
EXTRA COMFORT

**STRONG STONE POLYMER CORE**  
- Made of 70% stone powder for ultimate impact strength

**UNICLIC®**  
Patented Technology

**NATURALISTIC  
WOOD  
SPC COLLECTION**



enesco®

## RIGID CORE WATERPROOF STONE COMPOSITE FLOORING

Drop-Lock Easy Installation  
Scratch, Stain & Scuff Resistant  
Pre-Attached Acoustic Pad

**PHTHALATE FREE**



**DURABLE - ULTIMA**  
- Scratch and Stain Resistant Coating  
- Double UV Coating

**EASY DROP LOCK INSTALLATION**  
- Score and Snap Easily  
- Locks Securely



NATURALISTIC  
WOOD  
SPC COLLECTION



ENESCO®

www.enesco.com.tr

NATURALISTIC  
WOOD  
SPC COLLECTION



ENESCO®

www.enesco.com.tr



ENS-029098/4



ENS-029036/1



NATURALISTIC  
WOOD  
SPC COLLECTION



NATURALISTIC  
WOOD  
SPC COLLECTION



ENS-07324/I



ENS-029036/I5



NATURALISTIC  
WOOD  
SPC COLLECTION



NATURALISTIC  
WOOD  
SPC COLLECTION



ENS-029115/9



ENS-029053/4



NATURALISTIC  
WOOD  
SPC COLLECTION



enesco®

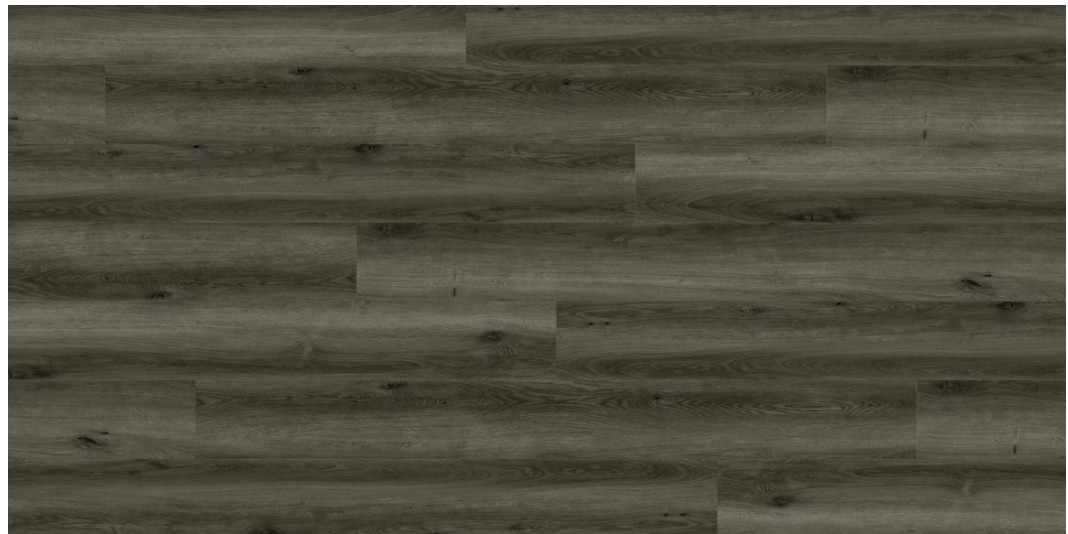
www.enesco.com.tr

NATURALISTIC  
WOOD  
SPC COLLECTION



enesco®

www.enesco.com.tr



ENS-029045/6



ENS-029053/3



NATURALISTIC  
WOOD  
SPC COLLECTION



enesco

www.enesco.com.tr

NATURALISTIC  
WOOD  
SPC COLLECTION



enesco

www.enesco.com.tr



ENS-02602/2



ENS-029053/7





**enesco®**

**PHTHALATE FREE**

**NATURALISTIC  
STONE  
SPC COLLECTION**

**INNOVATIONS  
FLOORING**

scan for more info



scan to watch



#### INSPECTION

Inspect each plank before installation. Claims will not be accepted if the product is installed despite of visible defects. Do not install over carpet or soft padded flooring.

#### INSTALLATION TOOLS:

Utility knife, tape measure, square angle, rubber mallet, 3/8" (10mm) spacers, tapping block.

#### INSTALLATION METHOD:

1. Inspect all planks for defect or damage. Do not install damaged or defective planks. Use them for cuts. During installation, if debris gets into the grooves, clean remove.
2. Lay the planks from left to right. Start at the left wall of the room and work towards the right side. The tongue side of the plank should face the starting wall.
3. Use 3/8" (10mm) spacers along the walls.
4. As you work right, drop and lock the short side of each plank using a rubber mallet. Your starting wall will not be perfectly straight. Proper set-up of the starting rows are critical for successful installation of your flooring. We highly recommend that you must watch the installation instructions by using our QR codes.
5. The last plank on the right needs to be cut. Score the plank with a sharp utility knife and square angle, then snap it. You can also use a saw to make the cut. The remaining piece will be your starter piece for the next row. But make sure you have the joints staggered at least 8". Joints from one row to the next should always be staggered a minimum of 8".
6. When you start a new row, angle the long side of the plank with the tongue going into the groove of the previous row. When placed, use a rubber mallet and tapping block to make sure the long side has engaged properly. Place the second board in the same way in the new row, then slide and drop over the short side to lock in place. Use a rubber mallet again to make sure the short side is engaged.

#### AFTER INSTALLATION

1. Remove spacers and install transition moldings. Do not fasten moldings to the planks. Transition moldings should be fastened to the subfloor, and wall trims should be fastened to the wall.
2. Use proper floor protectors/coasters under the legs of all furniture.
3. Do not use any polishers, waxes or harsh chemicals for cleaning.
4. Most flooring and furniture will be affected by prolonged periods of sunlight. If possible, use drapes on windows to reduce exposure.



**NATURALISTIC  
WOOD  
SPC COLLECTION**

**UNICLIC®**  
Patented Technology

scan for more info



scan to watch



- 1** Start by engaging the plank on the long side (angle-system)



- 2** Slide the plank until it reaches the short side of the next plank



- 3** Let the plank drop gently



- 4** Press with your thumb on both ends of the short side



- 5** Use a rubber mallet to lock planks on the short side



- 6** Use a tapping block to lock in the long side



**PHTHALATE FREE**

**enesco®**

www.enesco.com.tr