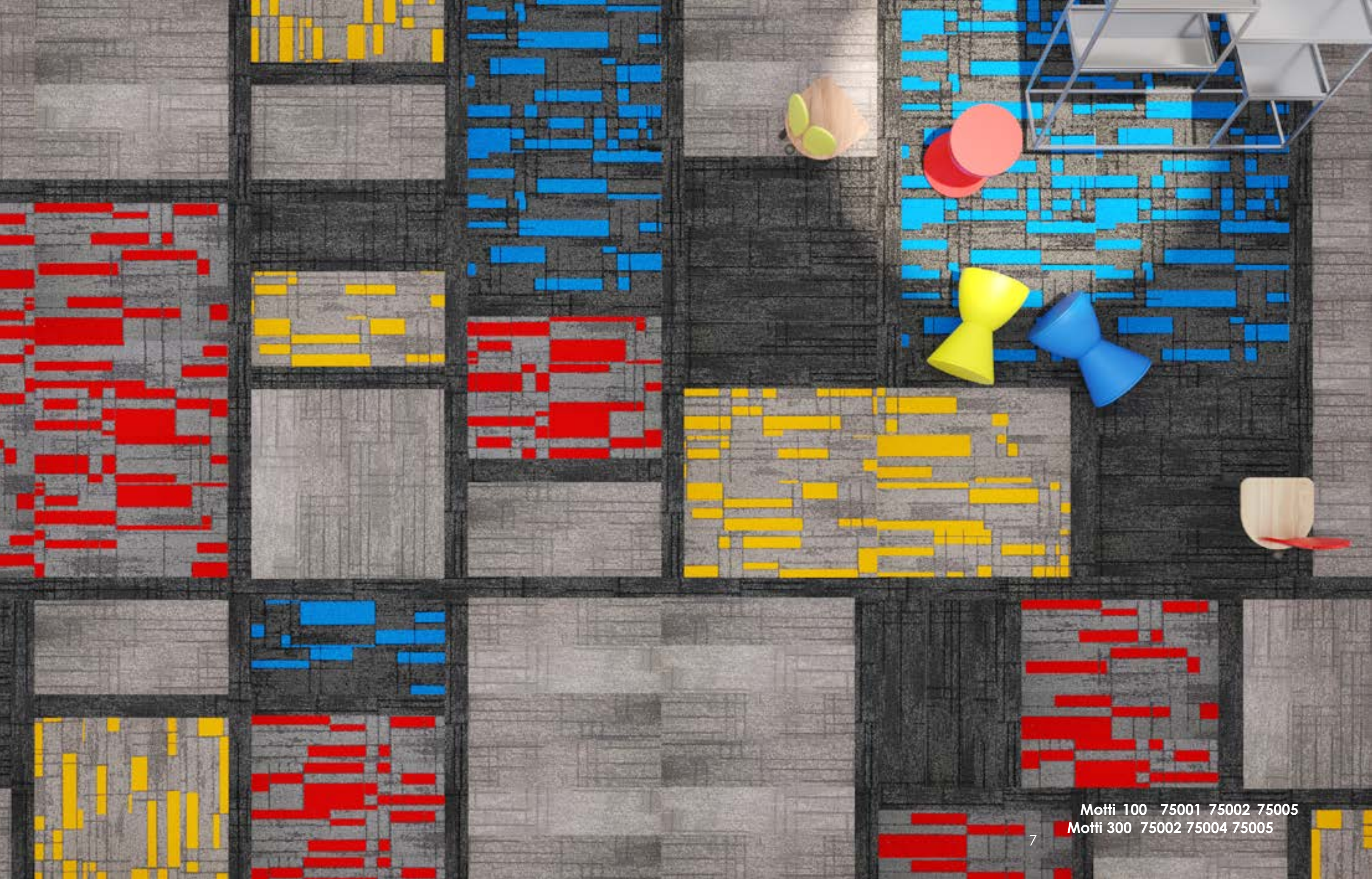
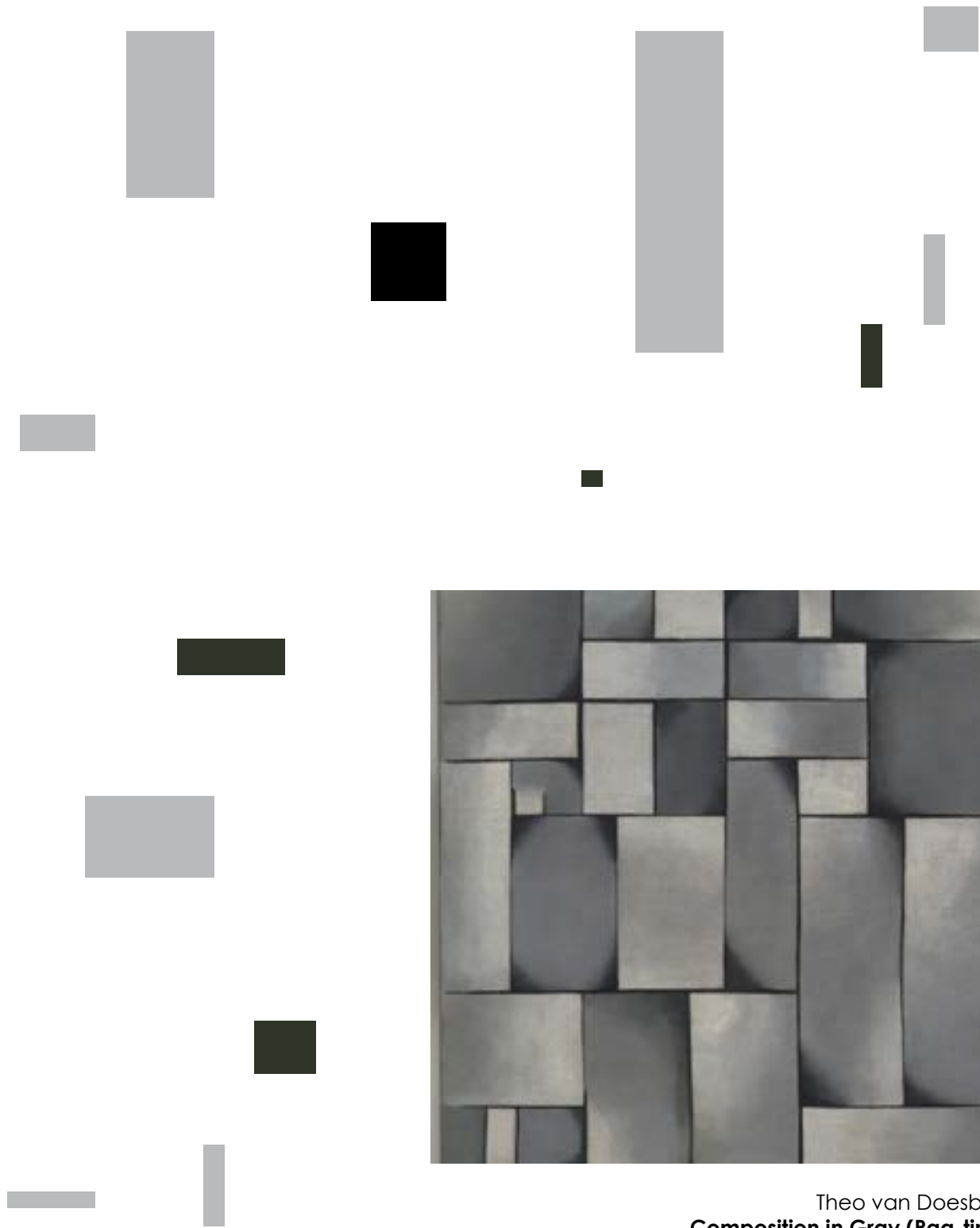


ILLUMI MOTIV



Motti 100 75001 75002 75005
Motti 300 75002 75004 75005



Theo van Doesburg
Composition in Gray (Rag-time)
1919



Motti basic



Motti 200 75001 basic
Motti 300 75001 basic



Motti 200 75001 basic
Motti 300 75001 basic



Theo van Doesburg
Composition IX
1916



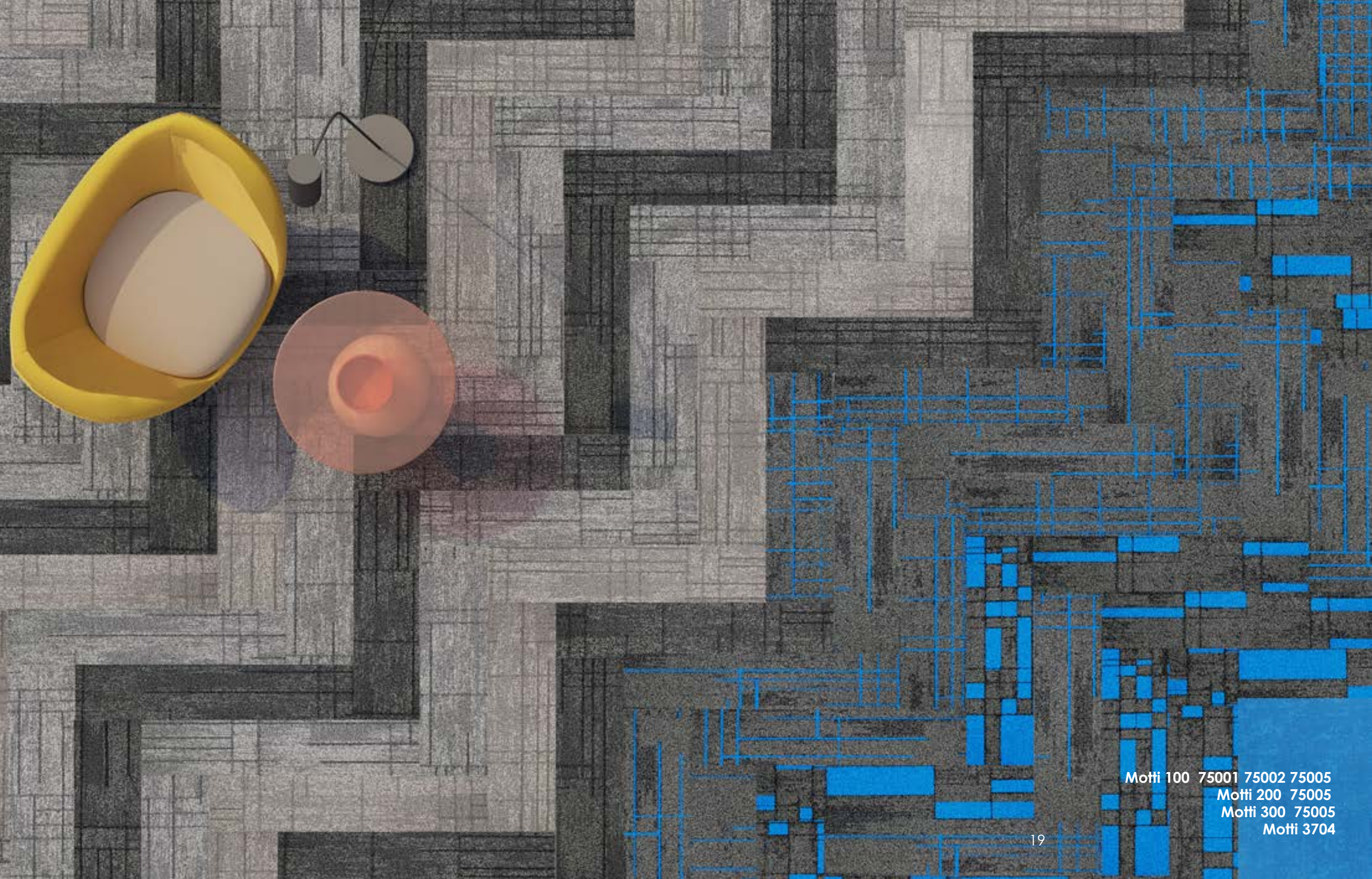
Motti 100



Theo van Doesburg
Counter Composition XIII
1929



Motti 100 75001 75002 75005
Motti 3704



Motti 100 75001 75002 75005
Motti 200 75005
Motti 300 75005
Motti 3704



Tableau No. 2/Composition No. VII
1913

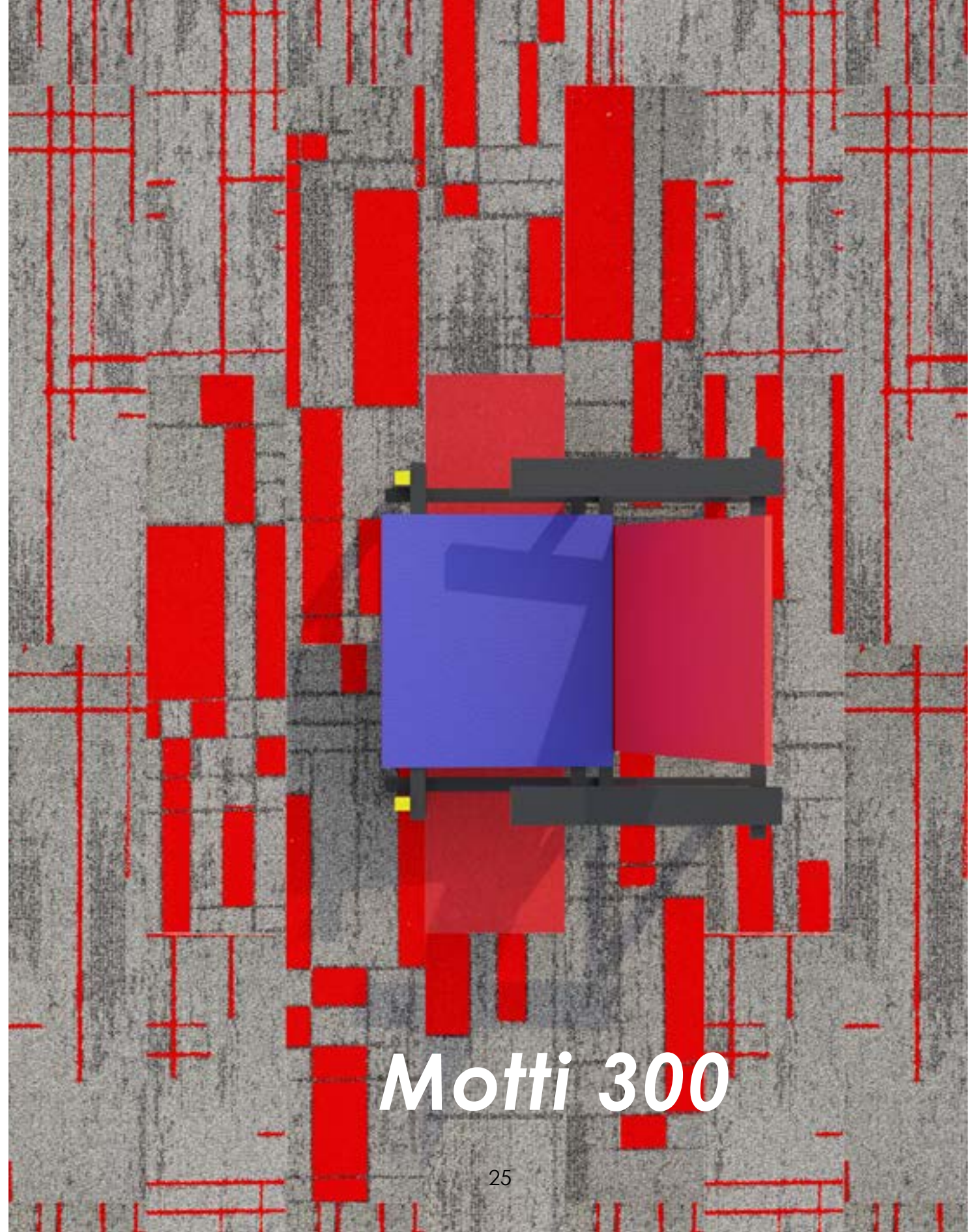


Motti 200





Gerrit Rietveld
Red Blue Chair
1917



Motti 300





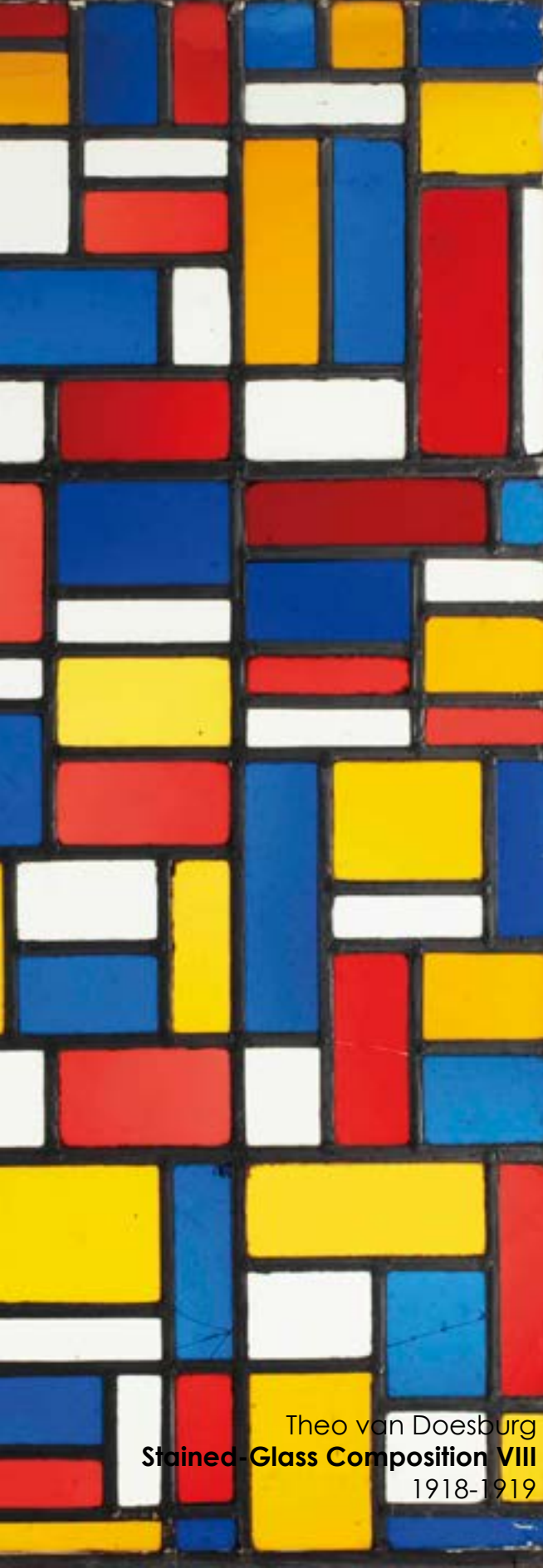
Plan 3. plafond avec 2 bords de la grande salle de l'Aubette à Strasbourg.

Les couleurs sont à l'échelle.

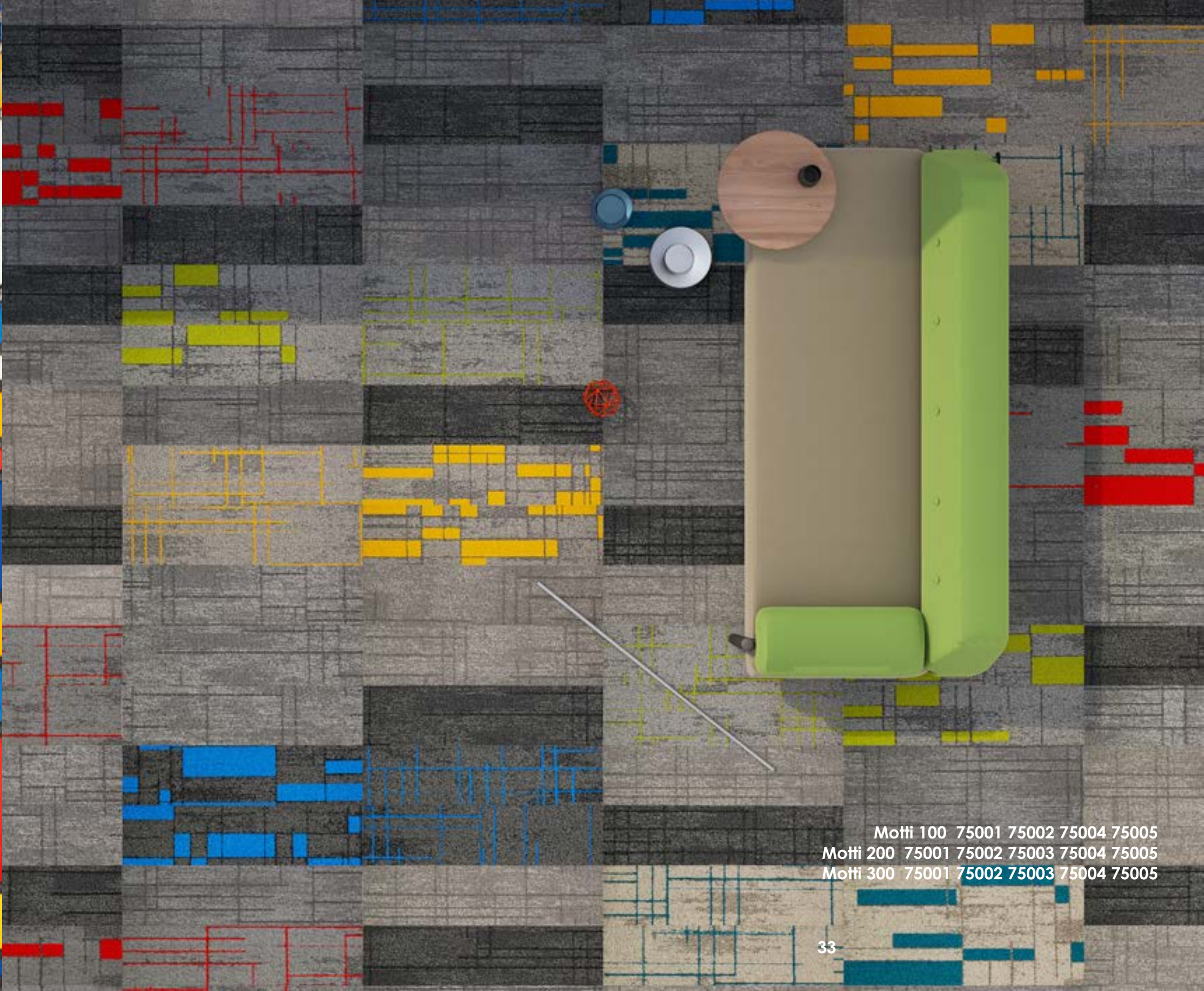
Theo van Doesburg
**Preliminary color scheme for ceiling and short walls of dance hall in Café Aubette,
Strasbourg, France**
1926-1928



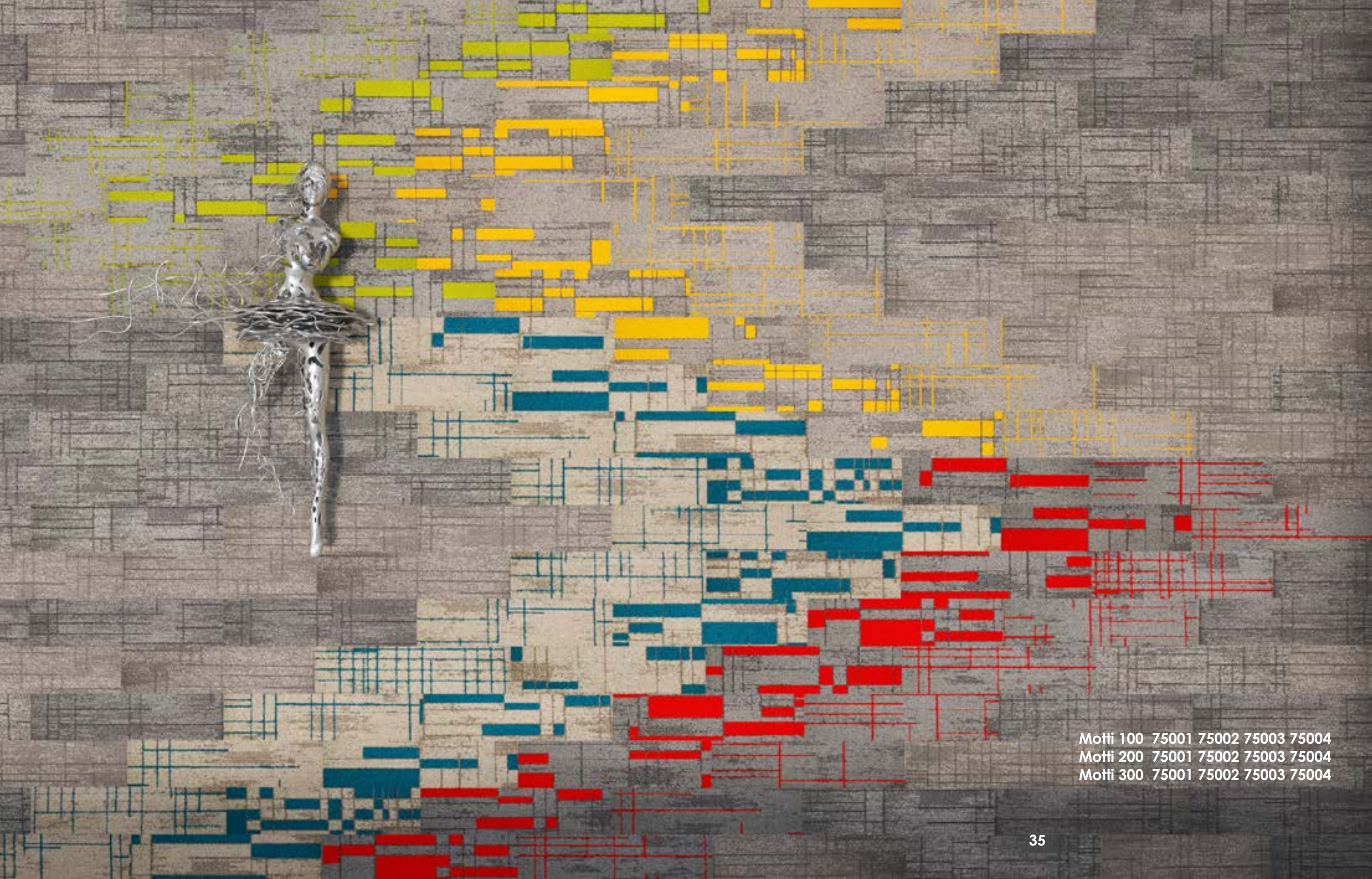
Motti 200 75003
Motti 300 75003
Motti 8561



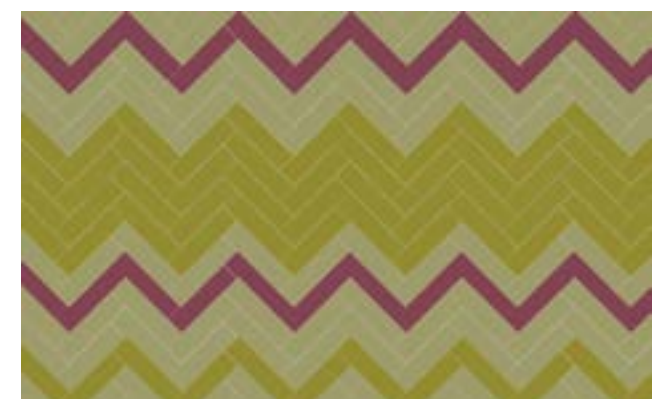
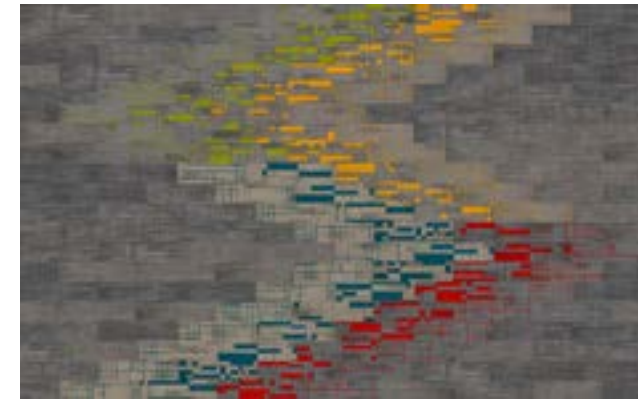
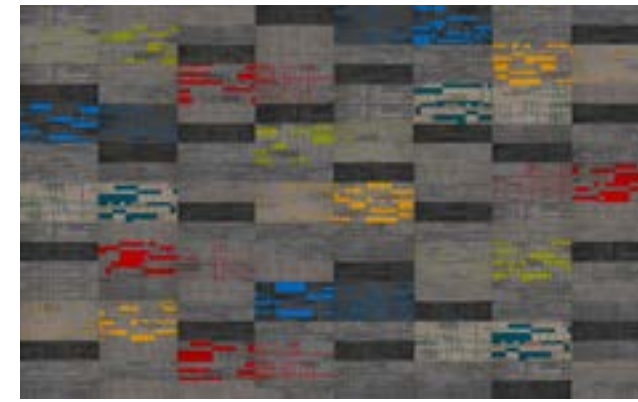
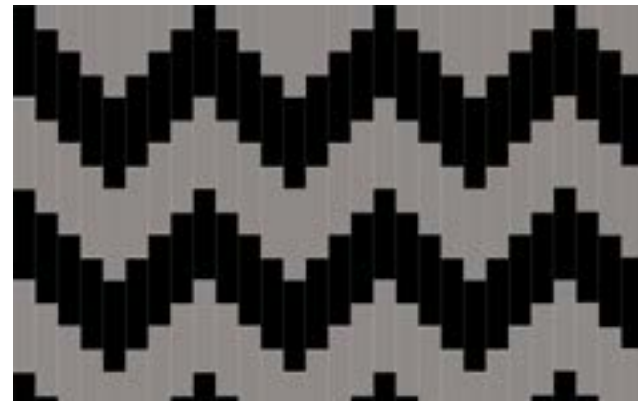
Theo van Doesburg
Stained-Glass Composition VIII
1918-1919



Motti 100 75001 75002 75004 75005
Motti 200 75001 75002 75003 75004 75005
Motti 300 75001 75002 75003 75004 75005



Motti 100 75001 75002 75003 75004
Motti 200 75001 75002 75003 75004
Motti 300 75001 75002 75003 75004



COLORS

Motti 100



Motti 200



Motti 300



75001



75001



75001



75001 basic



75002



75002



75002



75003



75003



75003



75004



75004



75004



75004 basic



75004 basic



75005



75005



75005

SPECIFICATIONS

Style Name:	Motti 100 Motti 200 Motti 300
Construction:	Multi-level Loop
Fiber:	Nylon
Gauge:	1/12" 1/10" 1/10"
Stitches:	13 10 10 per inch
Average Pile Height:	4.0m ± 0.5mm
Average Pile Weight:	18 24 26 oz/yd ²
Backing:	EcoAce-Bac®
Tile size:	25cm*100cm
Area of Use:	Commercial - Heavy Duty
Antimicrobial:	Ultra-Fresh Treatment (Available)
Flammability:	ASTM E 648 Class I, GB8624-2012 B1(C)
Smoke Density:	ASTM E 662 Less than 450, GB/T 8627-1999
Static Propensity:	AATCC-134 ≤3.5kV, GB/T 18044-2008



Ultra-Fresh is a registered trademark of Thomson Research Associates, Inc.