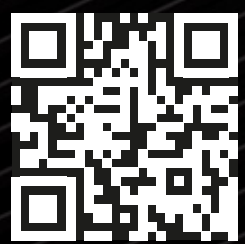


**ottoman**<sup>®</sup>  
BY ENESCO



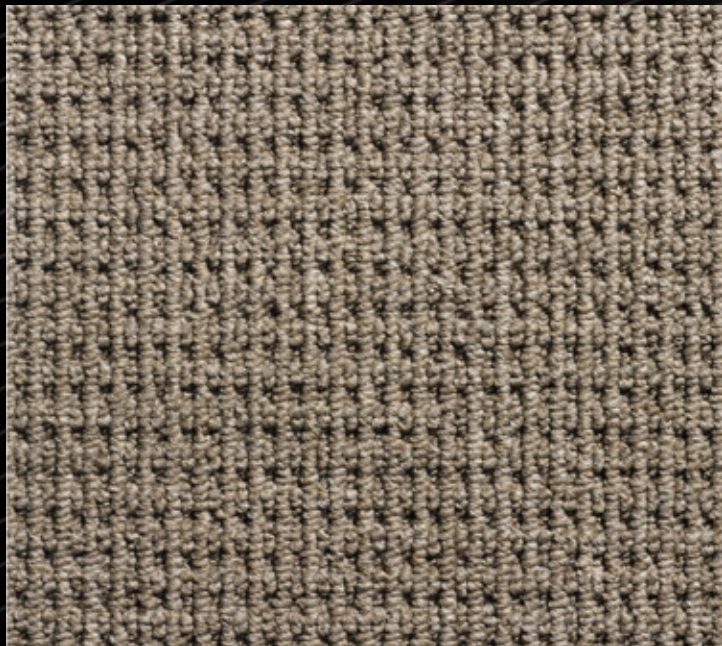
# SIMPLE LIFE

COLLECTIONS

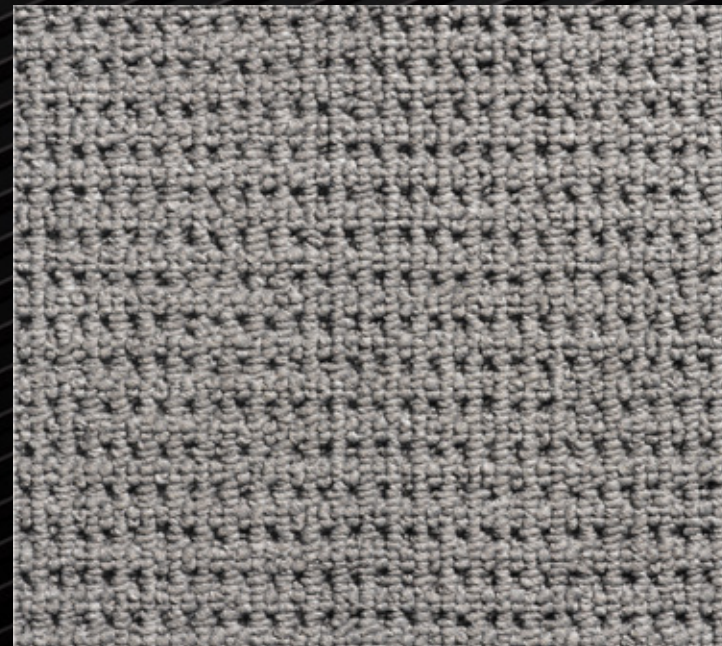
■ **LOOP PILE ROLL CARPET**







adoya-8416



adoya-8424



adoya-8413

## Adoya

### ROLL CARPET SPECIFICATIONS :

- construction : loop
- fiber : 100% PP
- pile height :  $5.0 \pm 0.5$  mm
- total thickness :  $6.5 \pm 0.5$  mm
- pile weight : 870 gr/m<sup>2</sup>
- total weight : 1950 gr/m<sup>2</sup>
- roll size : 4.00mt
- backing : action backing



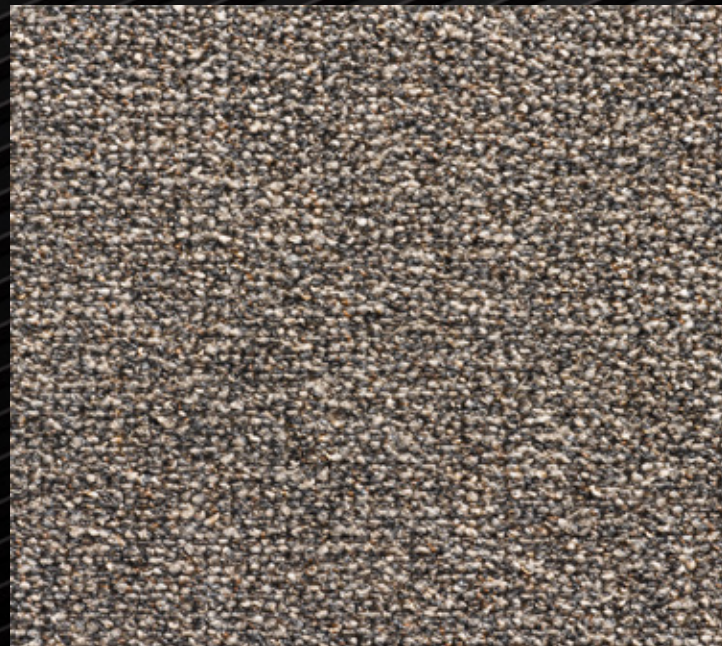


## ■ Sapphire

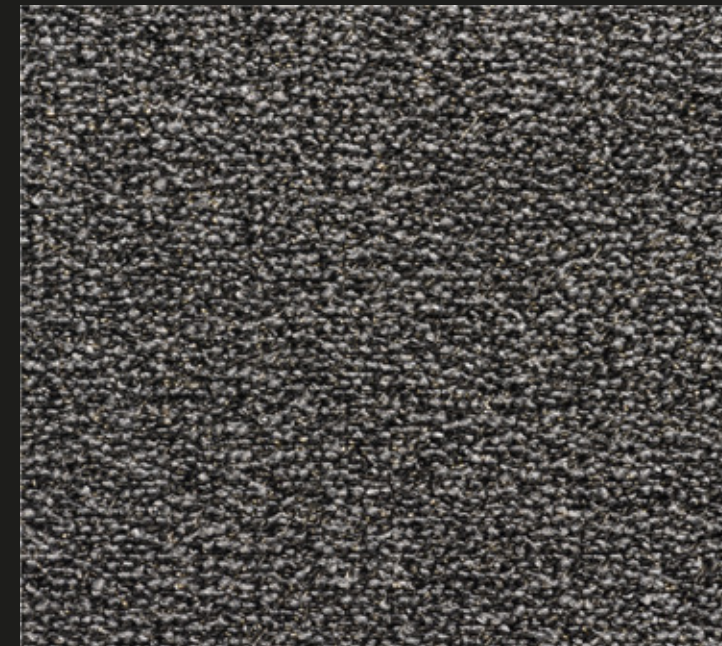
ROLL CARPET SPECIFICATIONS :  
construction : loop  
fiber : 100% PP  
pile height :  $2.5 \pm 0.5$  mm  
total thickness :  $5.0 \pm 0.5$  mm  
pile weight : 565 gr/m<sup>2</sup>  
total weight : 1730 gr/m<sup>2</sup>  
roll size : 4.00mt  
backing : action backing



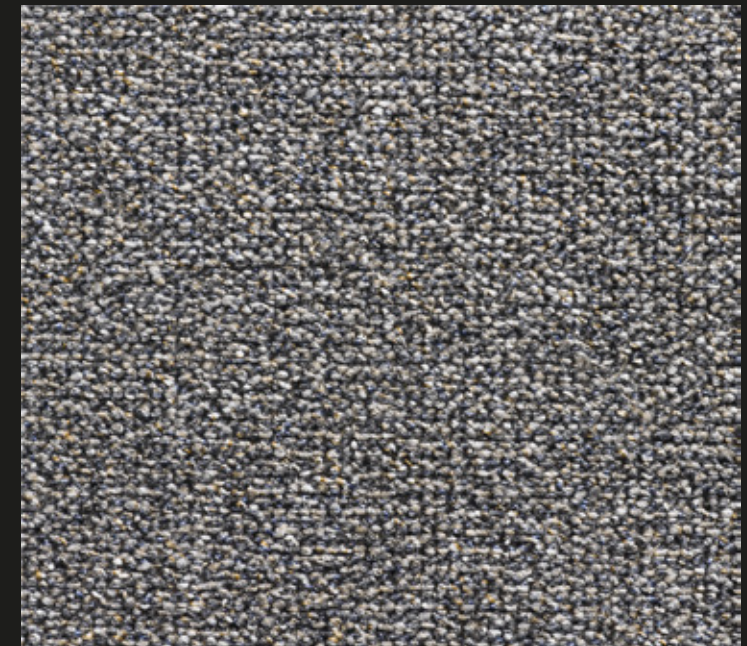
sapphire-2617



sapphire-2625



sapphire-2629



sapphire-2636



# STRABIL



## Strabil

ROLL CARPET SPECIFICATIONS :  
construction : loop  
fiber : 100% PP  
pile height :  $4.0 \pm 0.5$  mm  
total thickness :  $6.0 \pm 0.5$  mm  
pile weight : 670 gr/m<sup>2</sup>  
total weight : 1800 gr/m<sup>2</sup>  
roll size : 4.00mt  
backing : action backing



strabil-1522



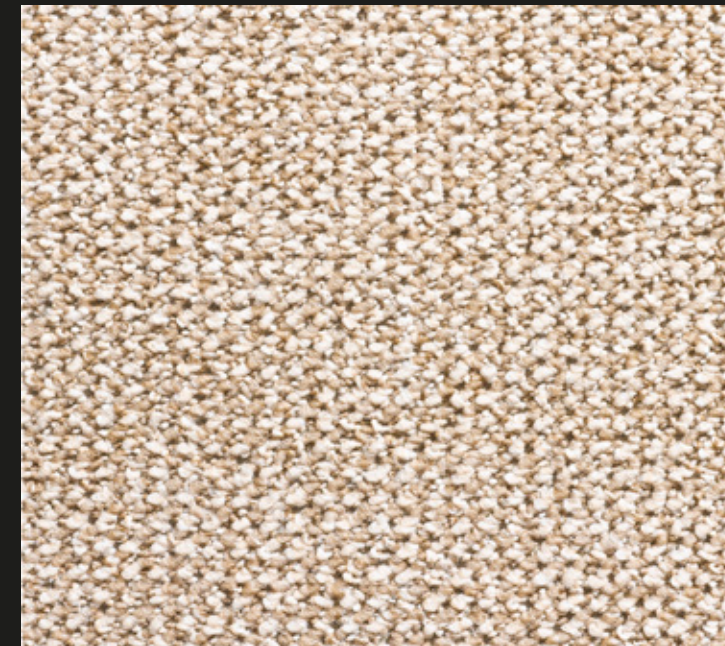
strabil-1544

# HERMES



## Hermes

ROLL CARPET SPECIFICATIONS :  
construction : loop  
fiber : 100% PP  
pile height :  $4.0 \pm 0.5$  mm  
total thickness :  $6.0 \pm 0.5$  mm  
pile weight : 380 gr/m<sup>2</sup>  
total weight : 1480 gr/m<sup>2</sup>  
roll size : 4.00mt  
backing : felt backing

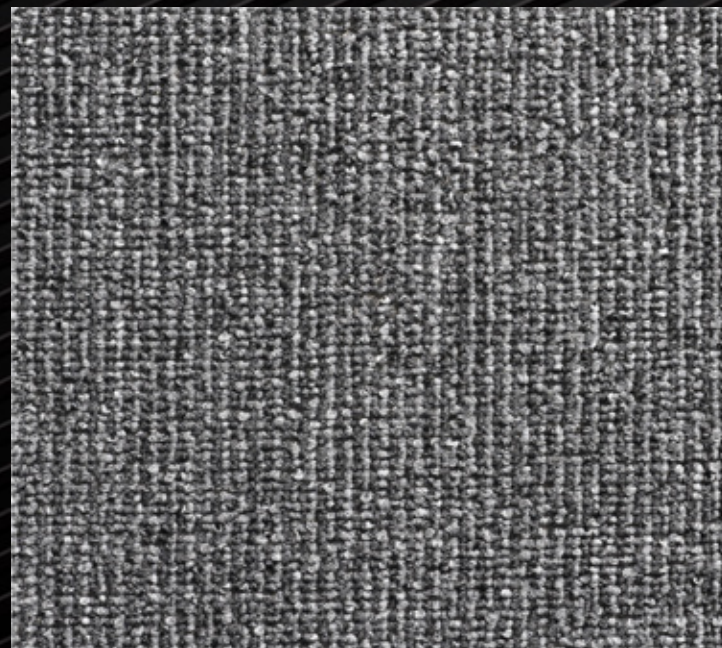


hermes-1413



hermes-1425





## Malcom

ROLL CARPET SPECIFICATIONS :  
construction : loop  
fiber : 100% PP  
pile height :  $3.0 \pm 0.5$  mm  
total thickness :  $4.5 \pm 0.5$  mm  
pile weight : 300 gr/m<sup>2</sup>  
total weight : 1370 gr/m<sup>2</sup>  
roll size : 4.00mt  
backing : felt backing

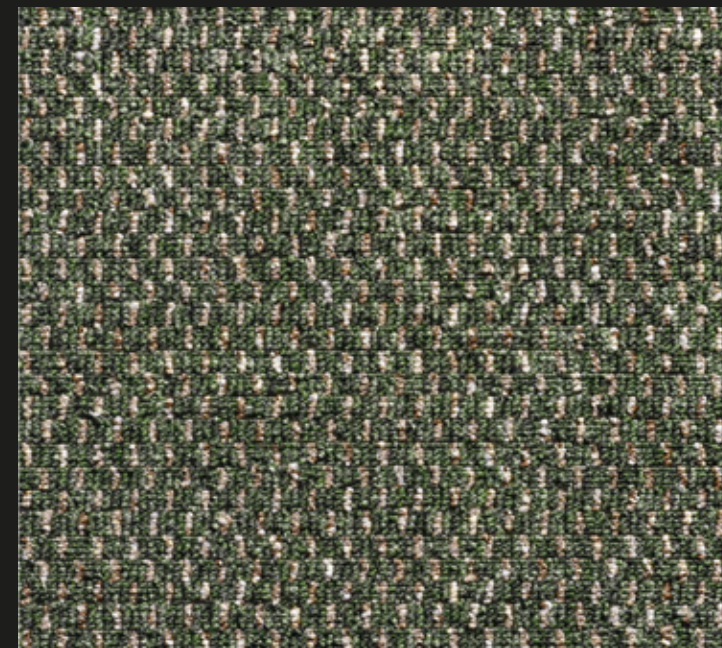
malcam-7019

malcam-7027

malcam-7018



# RUBLE



## Ruble

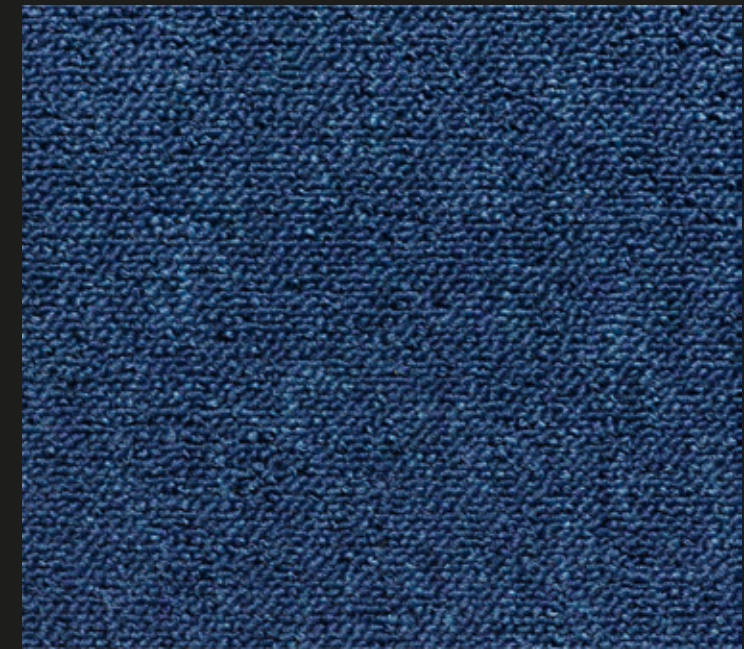
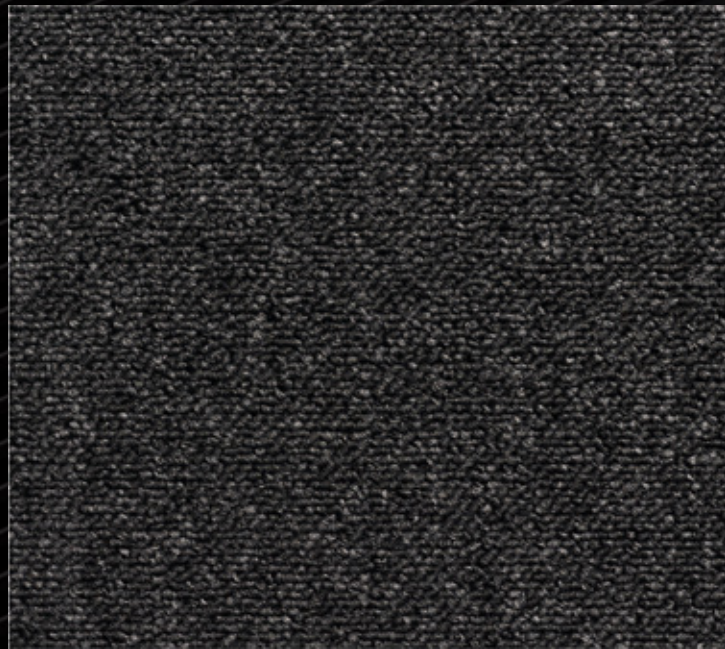
ROLL CARPET SPECIFICATIONS :  
construction : loop  
fiber : 100% PP  
pile height :  $2.1 \pm 0.5$  mm  
total thickness :  $5.6 \pm 0.5$  mm  
pile weight : 540 gr/m<sup>2</sup>  
total weight : 1852 gr/m<sup>2</sup>  
roll size : 4.00mt  
backing : felt backing

ruble-2159

ruble-2113

ruble-2146





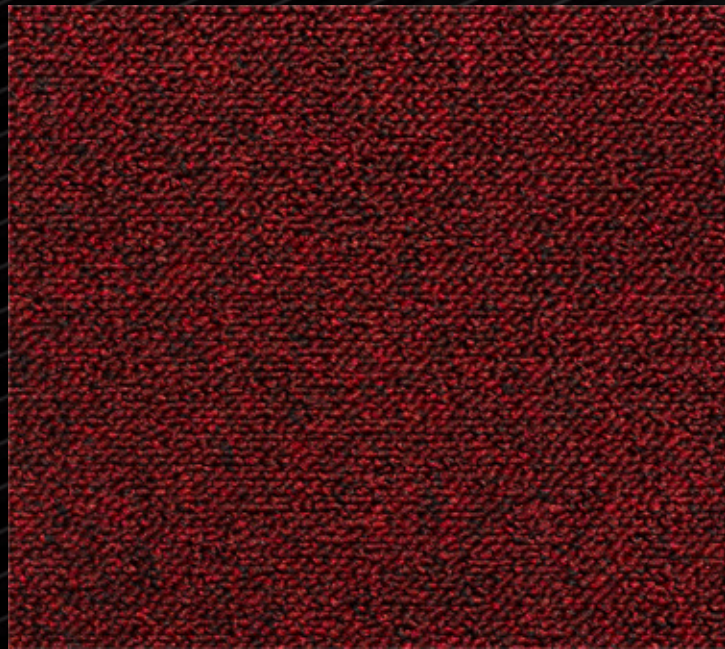
tubor-9630

tubor-9623

tubor-9622

tubor-9639





**Tubor**

ROLL CARPET SPECIFICATIONS :  
construction : loop  
fiber : 100% PP  
pile height : 4.0±0.5 mm  
total thickness : 6.0±0.5mm  
pile weight : 400 gr/m2  
total weight : 1500 gr/m2  
roll size : 4.00mt  
backing : felt backing

tubor-9659

tubor-9617

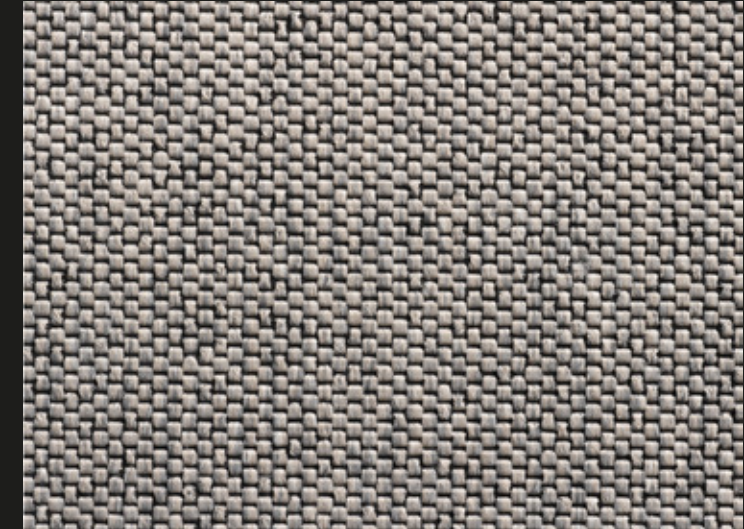
tubor-9613





**Sabangate**

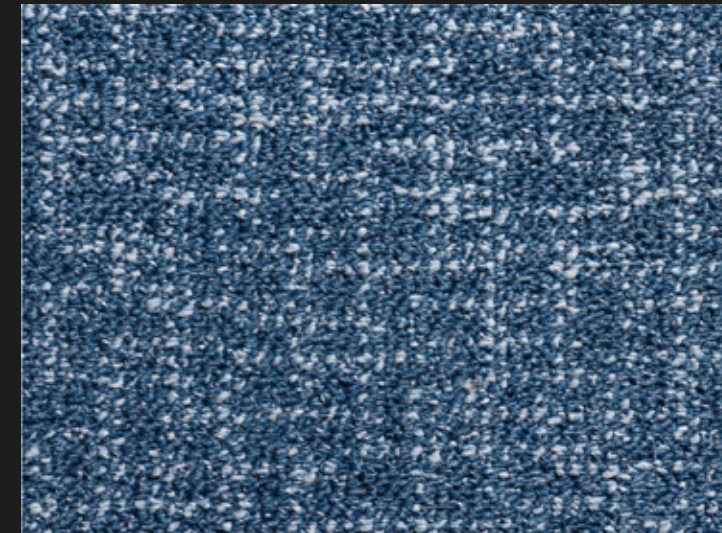
ROLL CARPET SPECIFICATIONS :  
 construction : loop  
 fiber : 100% PP  
 pile height : 3.5±0.5 mm  
 total thickness : x.0±0.5mm  
 pile weight : 250 gr/m2  
 total weight : 1161 gr/m2  
 roll size : 4.00mt  
 backing : felt backing



sabangate-9422

**Bartın**

ROLL CARPET SPECIFICATIONS :  
 construction : loop  
 fiber : 100% PP  
 pile height : 5.0±0.5 mm  
 total thickness : 6.0±0.5mm  
 pile weight : 660 gr/m2  
 total weight : 1840 gr/m2  
 roll size : 4.00mt  
 backing : action backing



bartın-5835



bartın-5813

**Charli**

ROLL CARPET SPECIFICATIONS :  
 construction : loop  
 fiber : 100% PP  
 pile height : 4.0±0.5 mm  
 total thickness : 5.0±0.5mm  
 pile weight : 550 gr/m2  
 total weight : 1630 gr/m2  
 roll size : 2.00mt  
 backing : action backing



charli-3122



charli-3152

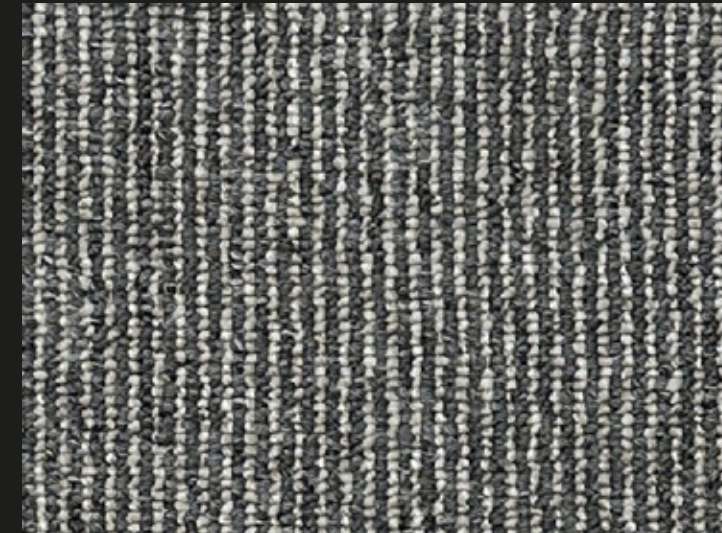




max-arte-12



max-arte-13



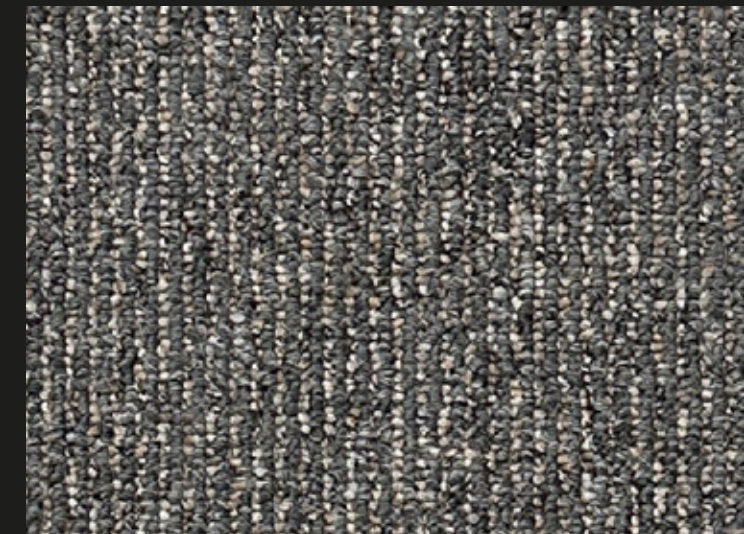
max-arte-10



max-arte-11



max-arte-01



max-arte-02

 **max-arte**

ROLL CARPET SPECIFICATIONS :

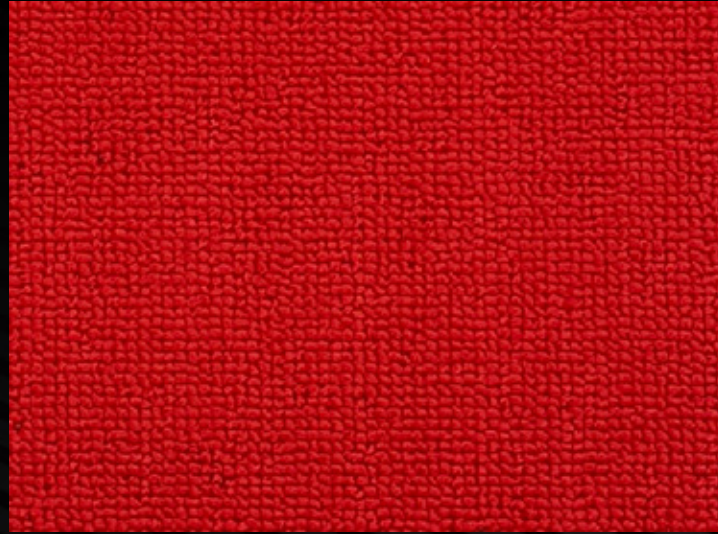
construction : loop pile  
fiber : 50% PES 50%PP  
pile height :  $4.0 \pm 0.5$  mm  
total thickness :  $8 \pm 0.5$  mm  
pile weight : 240 gr/m<sup>2</sup>  
total weight : 1380 gr/m<sup>2</sup>  
roll size : 4.00mt  
backing : dot backing



# FONTENT

## fontent

ROLL CARPET SPECIFICATIONS :  
construction : loop pile  
fiber : 100% PES  
pile height :  $4.0 \pm 0.5$  mm  
total thickness :  $7 \pm 0.5$  mm  
pile weight : 240 gr/m<sup>2</sup>  
total weight : 1380 gr/m<sup>2</sup>  
roll size : 4.00mt  
backing : felt backing



fontent



# BABUR

## babur

ROLL CARPET SPECIFICATIONS :  
construction : loop pile  
fiber : 100% pp  
pile height :  $4.0 \pm 0.5$  mm  
total thickness :  $8 \pm 0.5$  mm  
pile weight : 240 gr/m<sup>2</sup>  
total weight : 1380 gr/m<sup>2</sup>  
roll size : 4.00mt  
backing : dot backing



babur-02

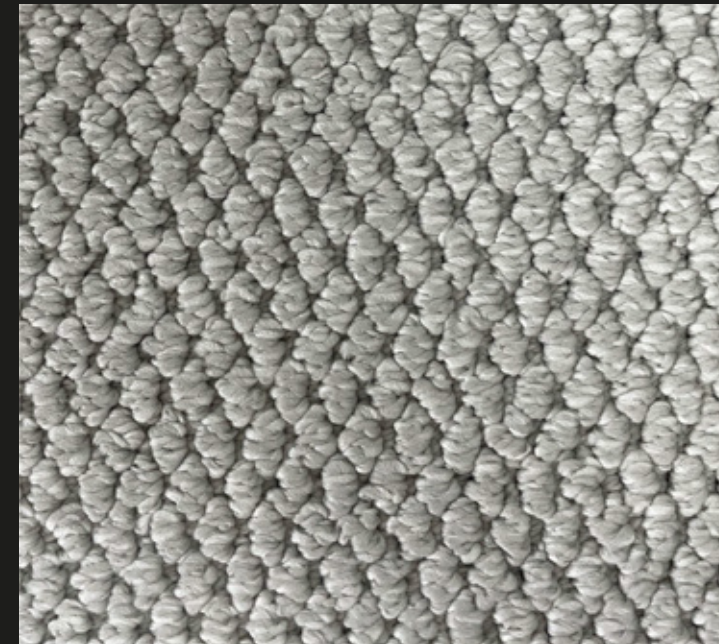


babur-33





# HAMILTON BRIDGE



## Hamilton Bridge

ROLL CARPET SPECIFICATIONS :  
construction : heat set  
fiber : 100% solution dyed polyester  
pile height : 7±0.5 mm  
total thickness : 9±0.5mm  
pile weight : 1250 gr/m2  
total weight : 2150 gr/m2  
roll size : 3.98mt  
backing : action fleece backing

SC-I441

SC-I438

SC-I445





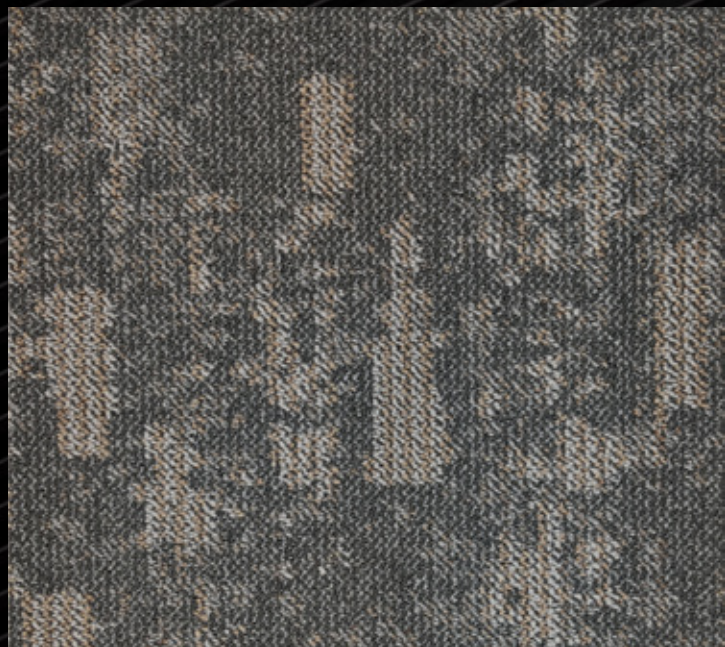
ROLL CARPET SPECIFICATIONS :  
 construction : loop  
 fiber : PP  
 pile height : 3.5±0.5 mm  
 total thickness : 5.5±0.5mm  
 pile weight : 500 gr/m2  
 total weight : 1500 gr/m2  
 roll size : 3.98mt  
 backing : action fleece backing

## ■ Max-Parkest

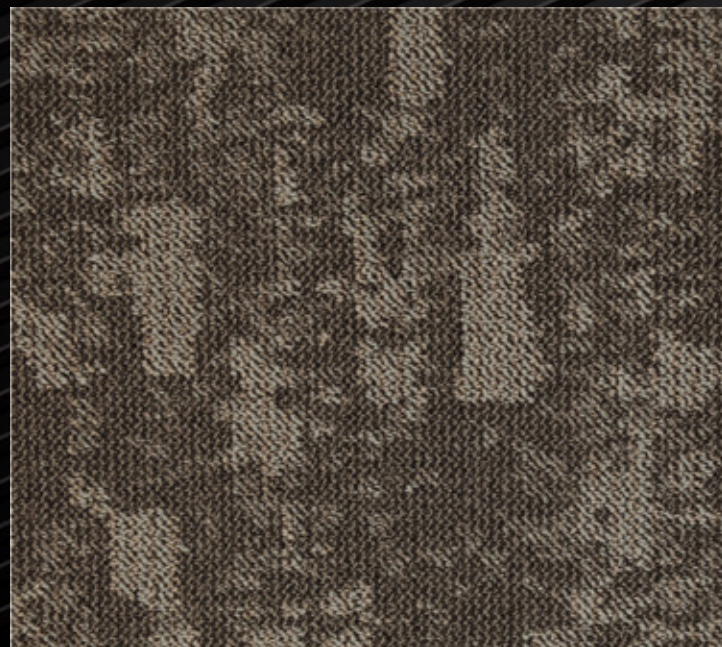


ROLL CARPET SPECIFICATIONS :  
 construction : loop  
 fiber : PP  
 pile height : 3.5±0.5 mm  
 total thickness : 5.5±0.5mm  
 pile weight : 500 gr/m2  
 total weight : 1500 gr/m2  
 roll size : 3.98mt  
 backing : action fleece backing

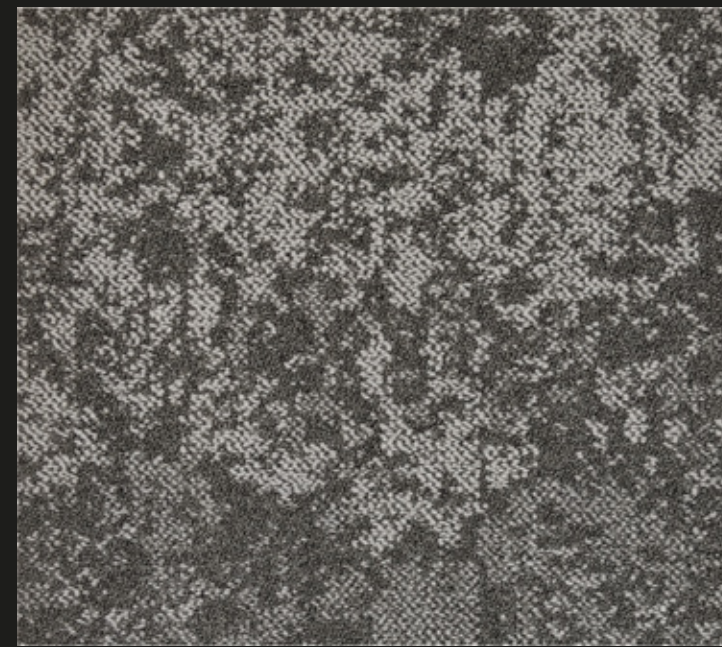
## ■ Skyest



MAX-PARKEST-576



MAX-PARKEST-546



SKYEEST-547



SKYEEST-574



■ **SIMPLE LIFE** COLLECTIONS  
**LOOP PILE ROLL CARPET**



**ottoman**<sup>®</sup>  
BY **ENESCO**

Add: Samed Vurgun Kucesi, no: 60, Nesimi / Baku, AZ1014, Azerbaijan  
Tel: +994 (12) 596 6030 Mob: +994 (50) 250 3366  
Mail: info@ottoman.az

Add: F.S.M.Mah., Y.V.Konaklari, F/61, Umraniye / Istanbul, 34771, Türkiye  
Tel: +90 (216) 650 2250 Fax: +90 (216) 650 2254  
Mail: info@enesco.com.tr



[www.ottoman.az](http://www.ottoman.az)



+994 12 596 6030



+994 50 250 3366