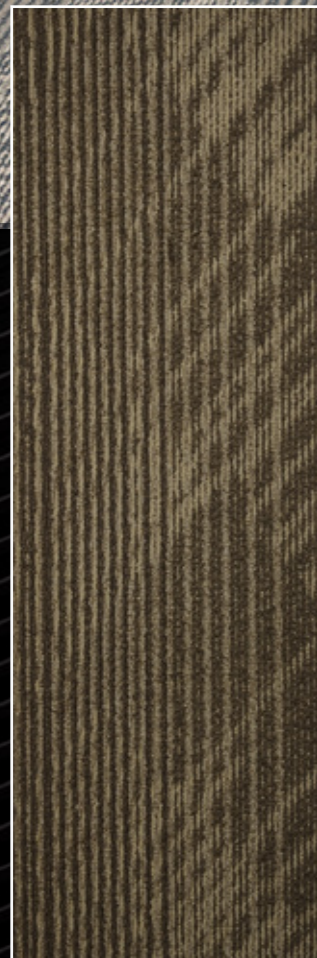


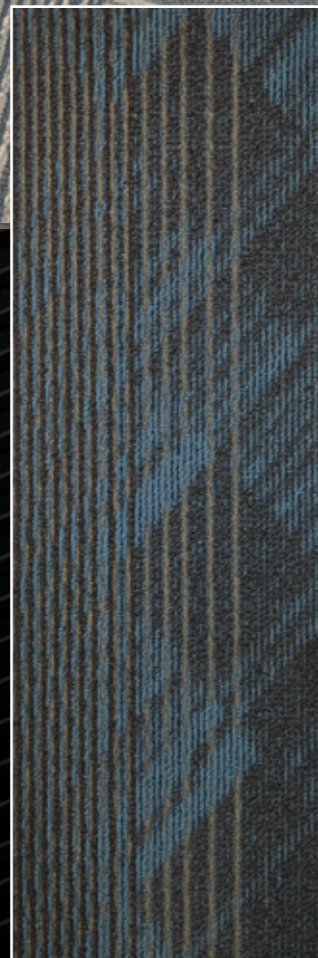
SCOTCH



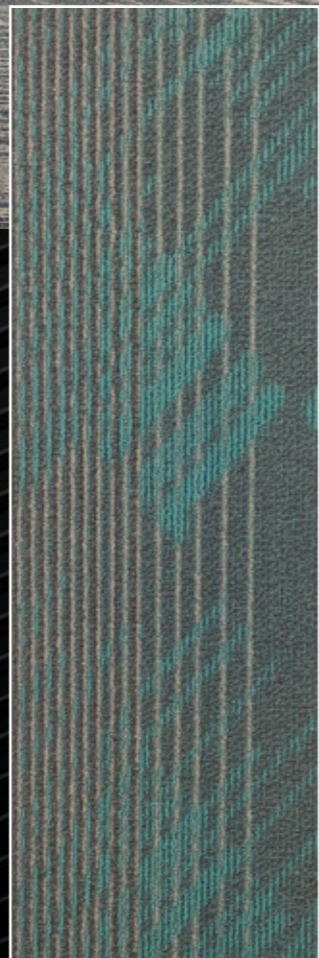
SCOTCH



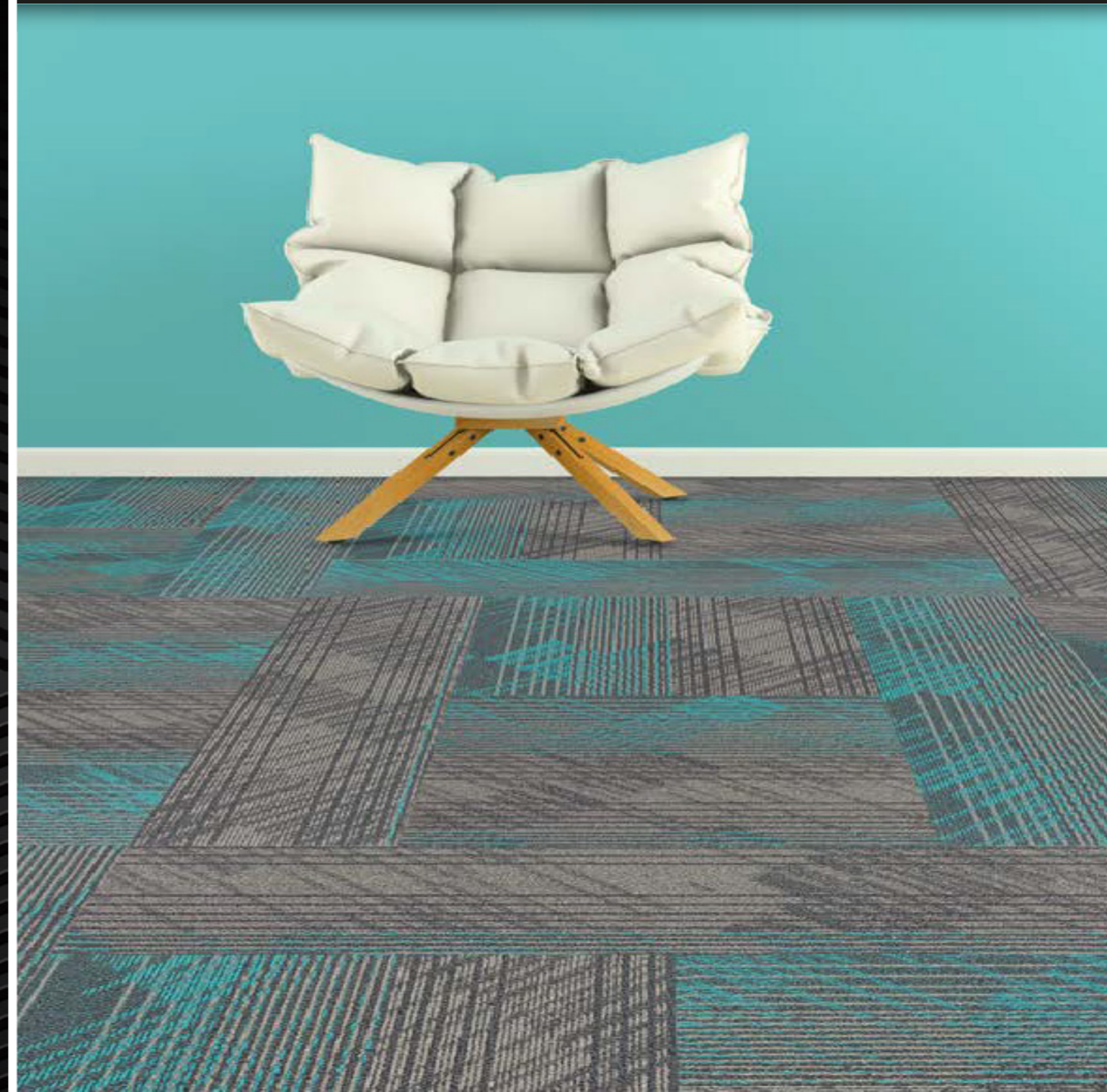
scoth 400



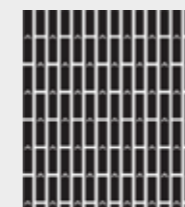
scoth 504



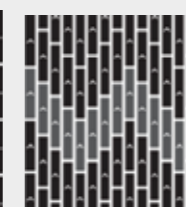
scoth 505



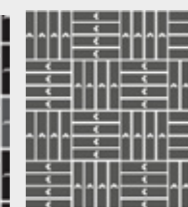
ASHLAR



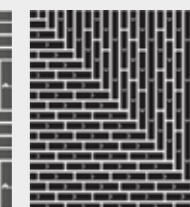
SEMI ASHLAR



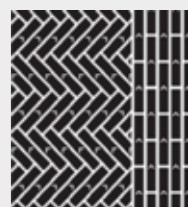
QUARTER TURN



HERRINGBONE



RANDOM



construction : multi-level loop  
 fiber : nylon  
 pile height : 4±0,5 mm  
 total thickness : 6,6±0.5 mm  
 pile weight : 680 gr/m2  
 total weight : 3430 gr/m2  
 tile size : 25x100 cm  
 backing : bitumen

